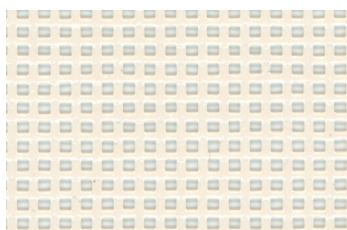


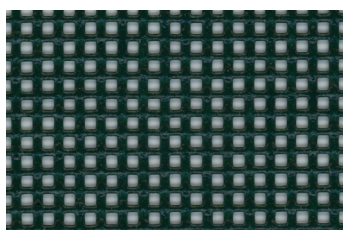
## Mesh 360-362

Précontraint®



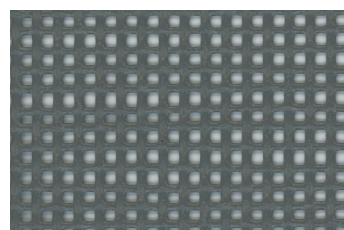
White

360-8100  
362-1323



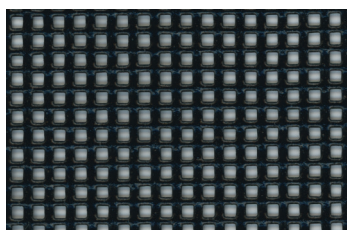
Green

360-50201  
362-50201



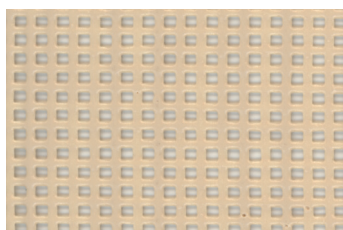
Grey

360-1070  
362-1070



Black

360-1075  
362-1075



Light ivory

362-1076

# Protect Mesh 360 - 362

Mesh with low opening factor suitable for agricultural  
& industrial applications

## Main advantages

- Exceptional dimensionnal stability thanks to Précontraint® technology
- UV resistant and long lasting
- High resistance to wind & deformation

## Main applications

- Pool cover / air filtration
- Winbreak building facade
- Agricultural stabulations
- Partition, shading, fences
- Masquing equipments

Protect Mesh	
360	362

### Technical specification

Support cloth DIN 60001	1,100 dtex PES HT
Coating	PVC
Finish	Acrylic varnish
Weight EN ISO 2286-2	430 g/m² • 12.7 oz/sq. yd
Width	267 cm • 105.1 in
Standard format length	±50 lm/±300 lm • ±54.68 yd/±328.08 yd

### Physical properties

Tensile strength (warp/weft) EN ISO 1421	250/270 daN/5 cm • 562/607 lbs/2 in
Tear strength (warp/weft) DIN 53.363	50/50 daN • 112/112 lbs
Wind reduction ASTM E2180	80%
Openess factor EN 20811	28%
Permeability to air* NFP 92-507	2.488 l/dm²/min
Extreme working temperatures DIN EN 1876-1	-30°C/+70°C • -22°F/+158°F

### Fire resistance

Rating - International fire certificate available, such as**	-	<b>M1</b> / NFP 92-507 <b>B1</b> / DIN 4102-1 <b>Method 2</b> / NFPA 701
--	---	--

### Environmental properties

Carbon impact EN 15804 + A1***	-	3.07 Kg CO <sub>2</sub> eq/m²
--------------------------------	---	-------------------------------

### Managment systems

Quality: ISO 9001 • Environment: ISO 14001 • Energy: ISO 50001		
--	--	--

### Certifications, labels

Précontraint®  
Technology



\* Test surface 20 cm², pressure 200 Pa

\*\* Contact us for latest certificate updates & validities

\*\*\* External verification pending

<sup>1</sup> Summarizes the group's CSR project focused on human, to align economic performance and positive impact.

Quoted technical characteristics are average values subject to +/-10% tolerance.

The buyer of our products is fully responsible for their application and their transformation with regard to any possible third party. The buyer of our products is responsible for their implementation and installation according to the standards, workmanship and safety regulations in force in destination countries. For information on our contractual warranty, please refer to the relevant terms and conditions. The values quoted above represent results of tests performed in compliance with common design practices and are provided for information only to enable customers to make the best use of our products. Our products are subject to changes based on technical advances and we reserve the right to modify their characteristics at any time. The buyer of our products is responsible for checking the validity of the above data.

The colours and textures represented are provided as reference only.